

559^W23

BY EMPIRICAL & CO

UNIT 5-6, 7-8, 9-10

3 Bedrooms / 4 Bathrooms
2,410 SqFt Interior
180 SqFt Exterior Balcony



View of Double-Height Living Space

INTERIORS

- Duplex unit with private elevator access and interior stair case
- South facing, double height living / dining room
- 18’ tall floor to ceiling custom German curtain wall windows (by Schucko)
- 7” engineered European Oak long plank flooring
- Solid wood swing and sliding doors with Italian Valli & Valli hardware
- Master bedroom with balcony and dressing room
- Secondary bedrooms with walking closet
- Miele Washer & Dryer
- Multi-purpose utility closet

KITCHEN

- German manufactured custom kitchen cabinetry by Eggersmann
- Walnut and lacquered cabinet doors
- Honed Montclair Danby marble countertops and walls
- Miele appliances throughout: Double ovens, gas cooktop, hood ventilation, dishwasher
- Sub-Zero refrigeration and wine cooler
- Stainless steel sink and Italian faucet by Fantini

MASTER BATH

- Combination Montclair Danby marble slab and tile, white quartzite stone tile and large format Italian glass tile walls
- Montclair Danby marble tile floors

- Duravit bathtub with Montclair Danby marble slab deck and surrounds
- Spa-like features including shower stall with window and separate toilet room with wall hung toilet by Duravit
- Italian plumbing fixtures by Fantini
- Custom wood double vanity and 7’ long mirror cabinet
- German Floor-to-ceiling window (by Schucko)

SECONDARY BATHS

- Combination marble mosaic and white quartzite stone tile walls
- Marble tile floors
- Duravit bathtub with white quartzite stone tile skirt OR
- Separate shower stall with Raindance shower

- Wall hung toilet by Duravit
- German plumbing fixtures by Hansgrohe
- Custom lacquer vanity and 7’ long mirror cabinet

MAIN LEVEL BATH

- Combination Montclair Danby marble slab and tile, white quartzite stone tile and large format Italian glass tile walls
- Montclair Danby marble tile floors
- Wall hung Duravit toilet
- Separate shower stall with Raindance shower
- German plumbing fixtures by Hansgrohe
- Custom wood vanity and 7’ long mirror cabinet

559^W23

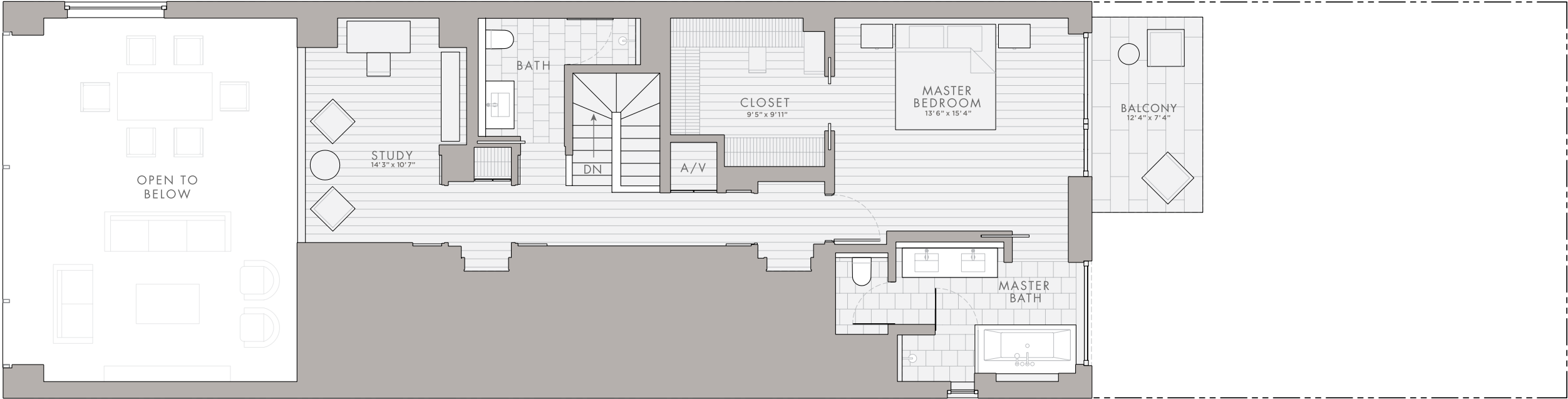
BY EMPIRICAL & CO

UNIT 5-6, 7-8, 9-10

3 Bedrooms / 4 Bathrooms
2,410 SqFt Interior
180 SqFt Exterior Balcony

EXCLUSIVE BROKERAGE
Corcoran Group Real Estate
Julie Pham & Daren Herzberg
212.444.7870

UNIT 5-6, 7-8, 9-10 : UPPER LEVEL



UNIT 5-6, 7-8, 9-10 : MAIN LEVEL

